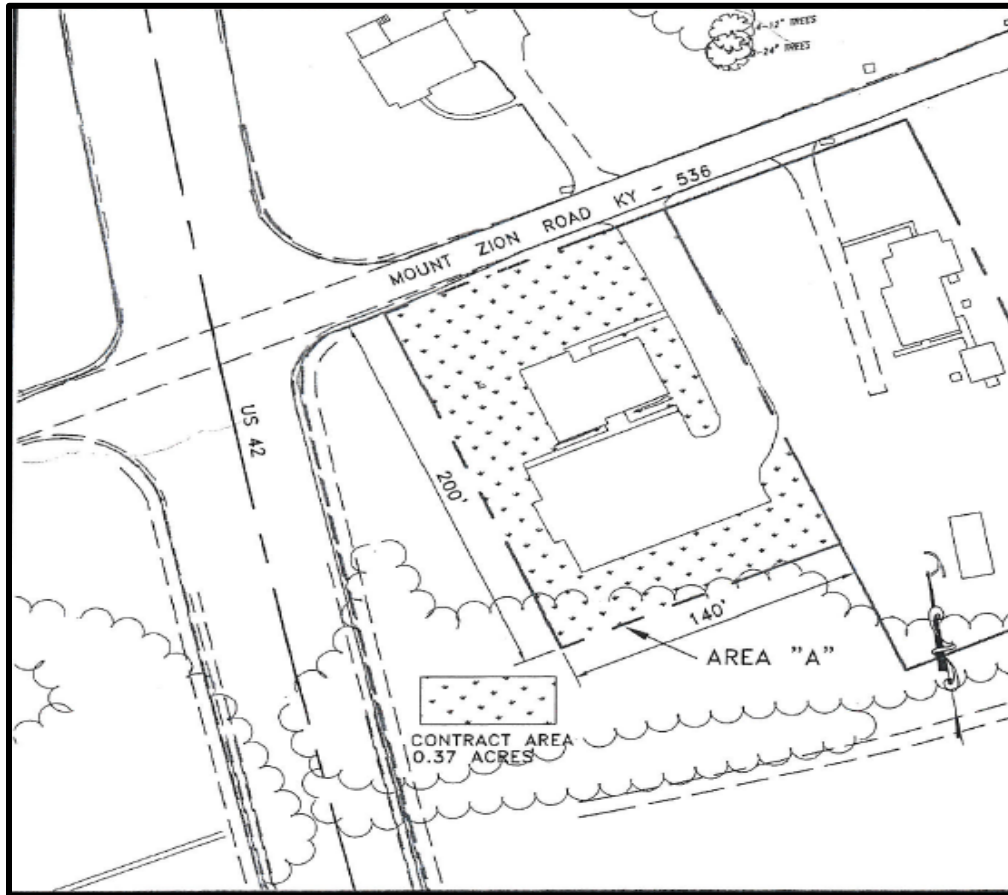


Area A

Union City Building



***Required Work:**

- **Turf Maintenance**
- **Turf Treatments**
- **Tree/Shrub Maintenance**
- **Landscaped Bed Maintenance**
 - Watering x2 weekly
- **Spring Clean-up/ Mulching**
- **Perennial Planting**

*See "Specific Work Tasks" for further clarification on the expected scope of work being required.

Area B

The Union Rice Cemetery



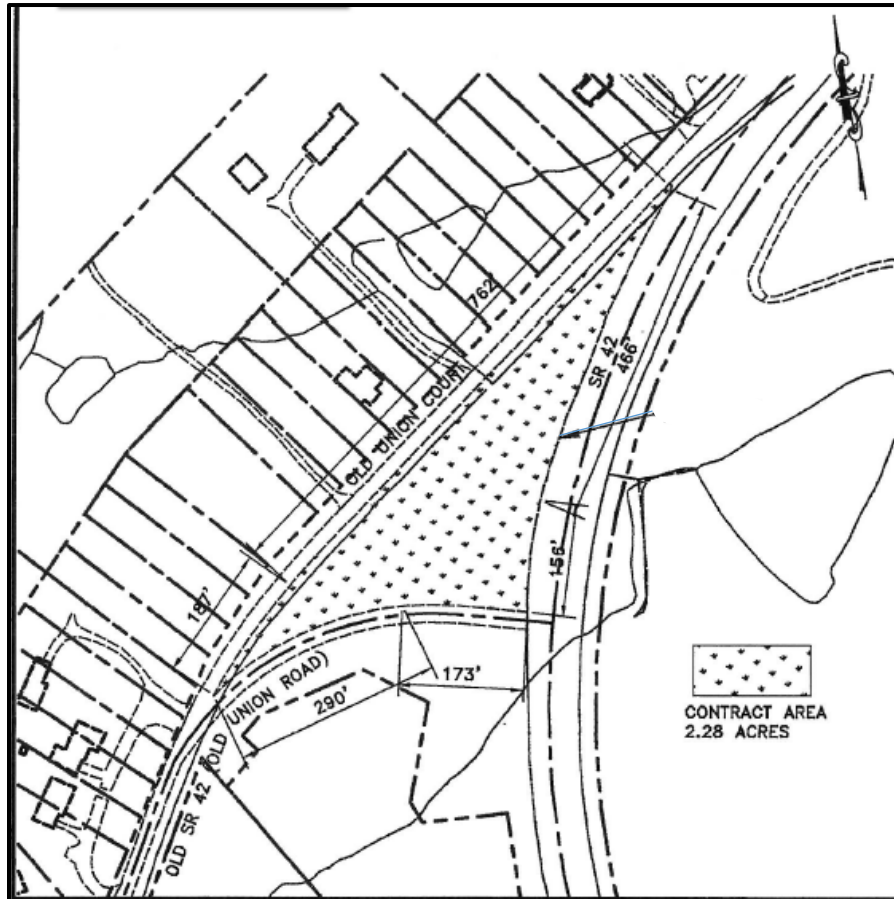
***Required Work:**

- **Turf Maintenance**
- **Tree/Shrub Maintenance**
 - *Fence line free of brush*
- **Landscaped Bed Maintenance**
 - *Landscape Front Flower Bed*
 - *Watering x2 weekly*
- **Spring Clean Up/Mulching**
- **Maintenance on New Gravesites**

*See "Specific Work Tasks" for further clarification on the expected scope of work being required.

Area C

Corner of Old Union Road and US 42



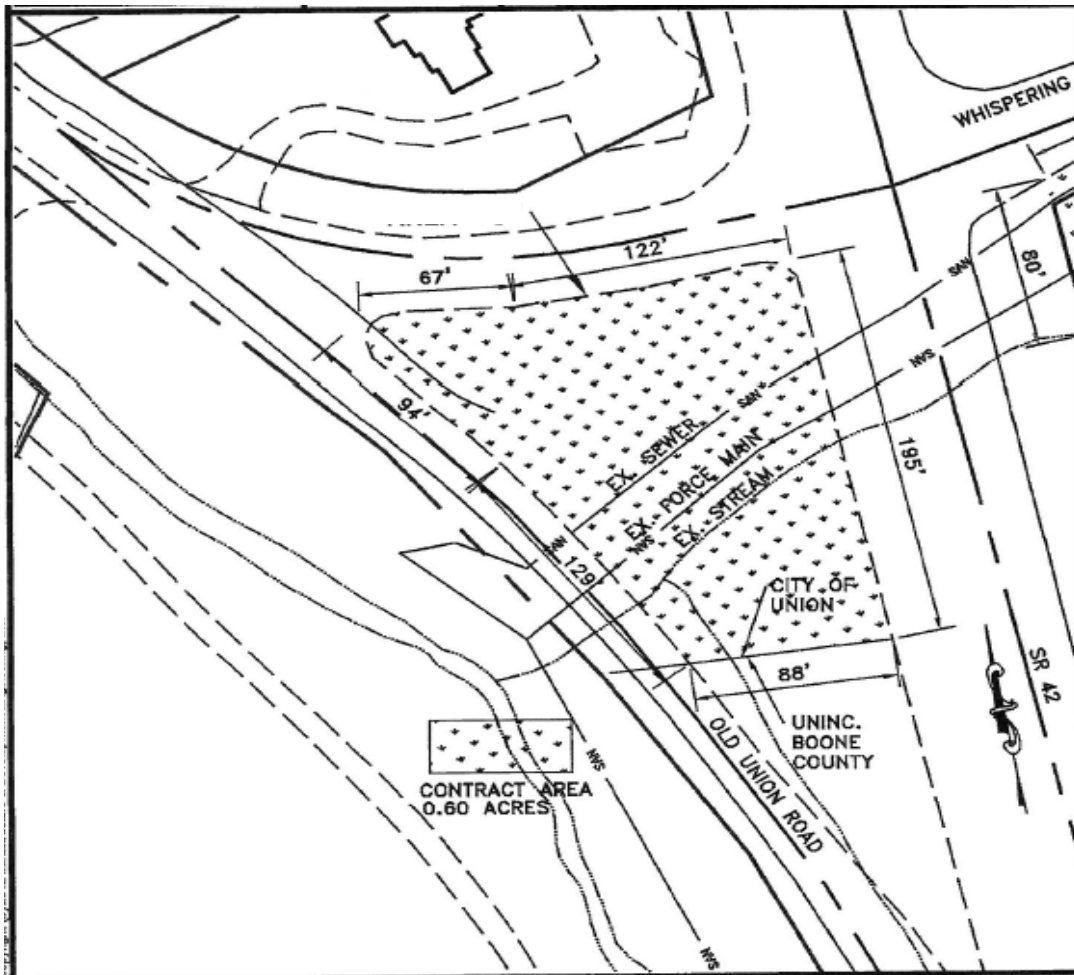
***Required Work:**

- Turf Maintenance
- Tree/Shrub Maintenance
- Landscaped Bed Maintenance
- Spring Clean Up/Mulching

*See "Specific Work Tasks" for further clarification on the expected scope of work being required.

Area D

Bottom of Old Union Road and US 42 (Near Whispering Trails)



***Required Work:**

- Turf Maintenance

*See "Specific Work Tasks" for further clarification on the expected scope of work being required.

Map E-1
Lassing Green Subdivision
Right of Way Mowing on US 42



***Required Work:**

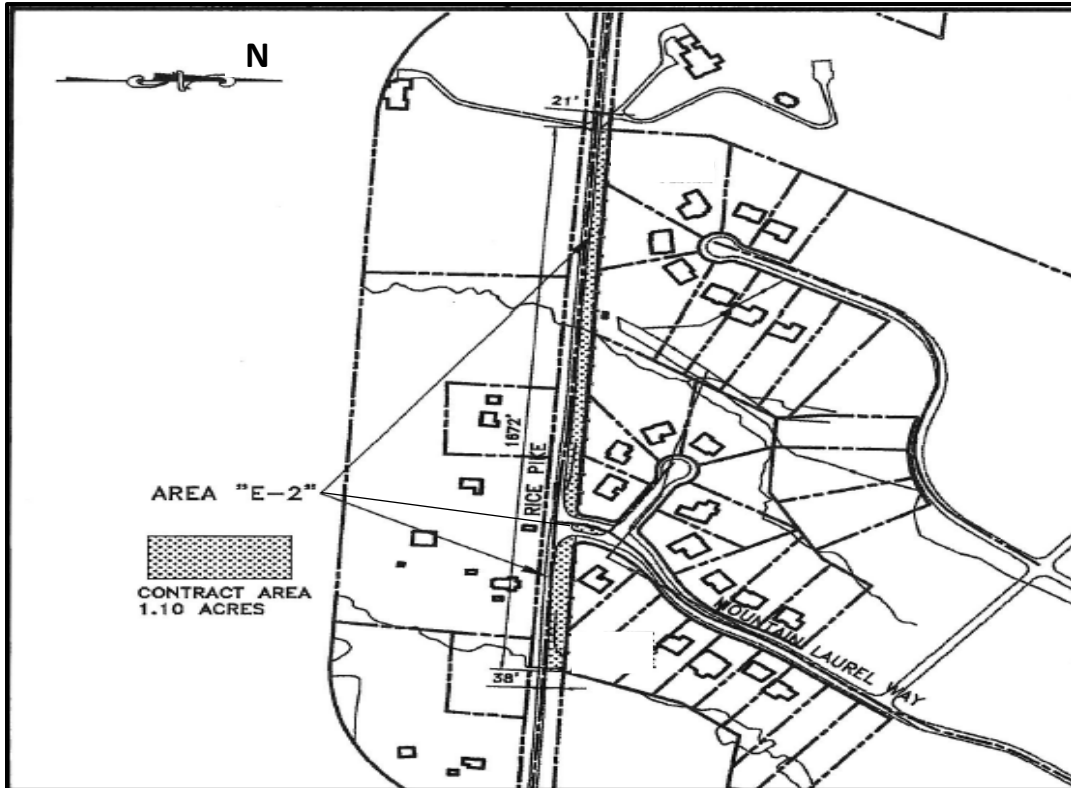
- **Turf Maintenance**

*See "Specific Work Tasks" for further clarification on the expected scope of work being required.

Area E-2

Lassing Green Subdivision

Rice Pike Right of Way and Entrance Island



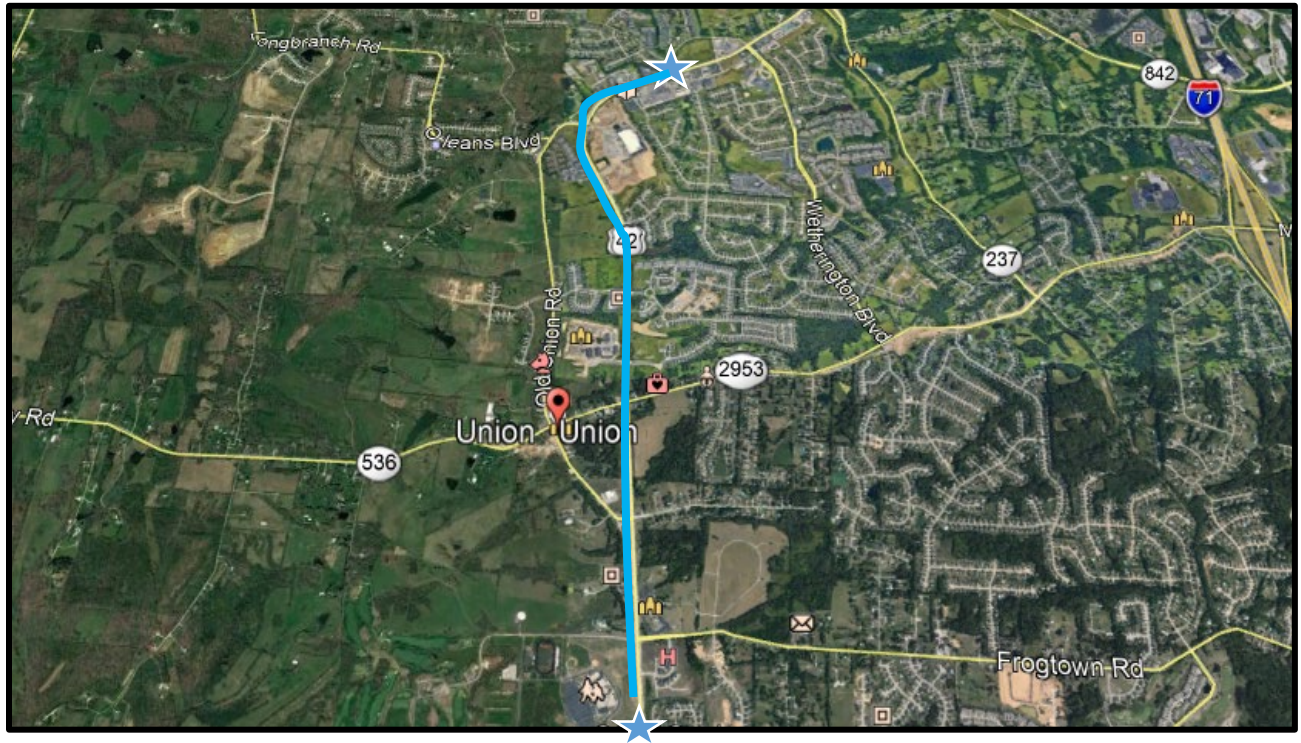
***Required Work:**

- Turf Maintenance
- Turf Treatments
- Tree/Shrub Maintenance
- Landscaped Bed Maintenance
- Spring Clean-up/ Mulching

*See "Specific Work Tasks" for further clarification on the expected scope of work being required.

Area F

US 42 Corridor and 3 Landscape Islands



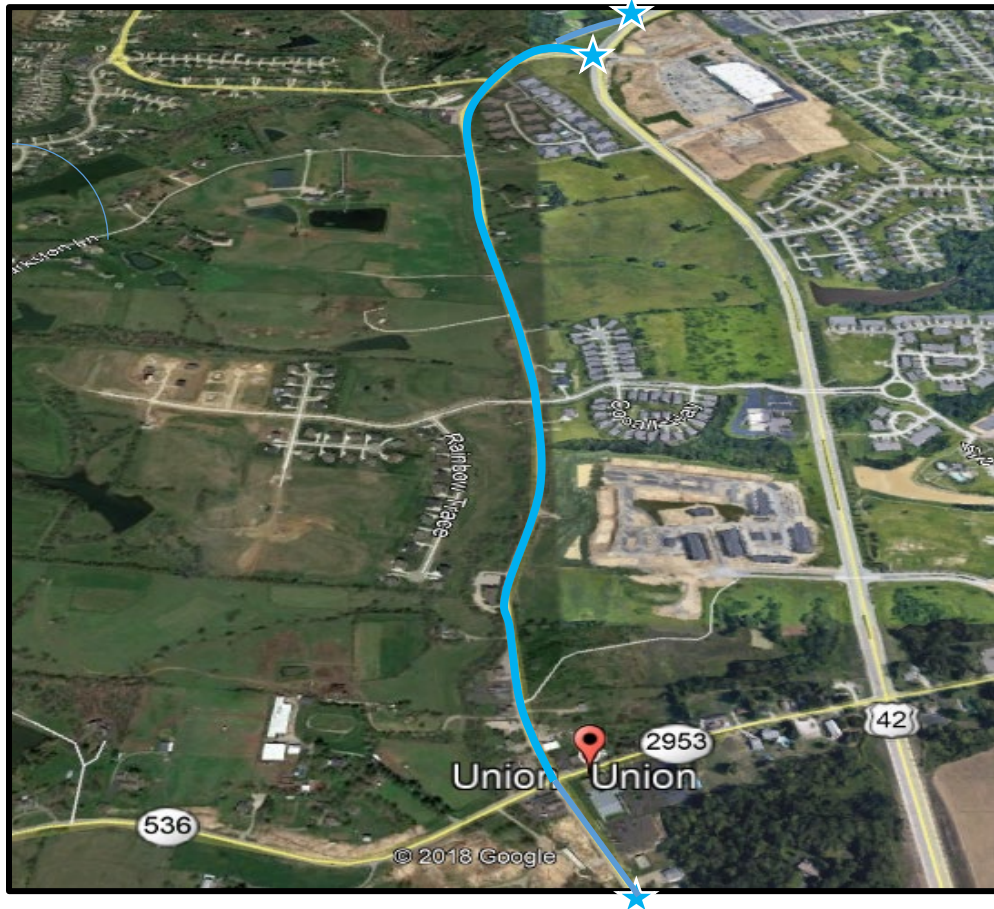
***Required Work:**

- **Turf Maintenance**
 - Mowing begins at Calvary Drive and south on US 42 to past Ryle High School.
 - Contractors are required to cut approximately **25 feet** from the back of curb on each side of US 42 where possible. Difficult terrain will make this cutting width vary, but **25 feet** should be achieved where possible.
- **Turf Treatments**
- **Tree/Shrub Maintenance**
- **Landscaped Bed Maintenance**
- **Spring Clean-up/ Mulching**
- **Weed Control on public sidewalks/curbs along relocated US 42**

*See "Specific Work Tasks" for further clarification on the expected scope of work being required.

Area G

Old Union Road



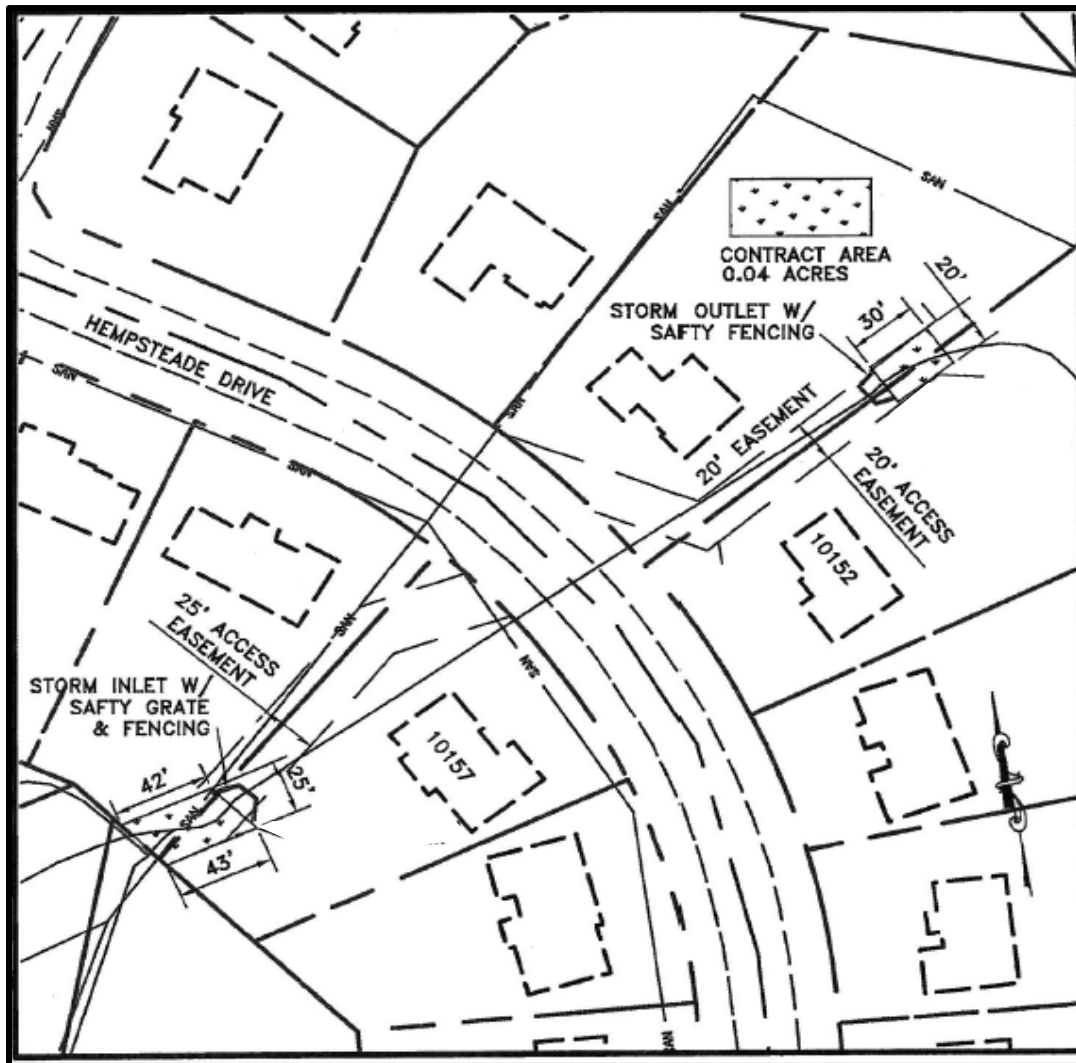
***Required Work:**

- **Secondary Mowing**
 - Secondary mowing is similar to TURF MAINTENANCE with the addition of semi-annual brush-hogging services to keep vegetation off from encroaching upon the roadway. Special consideration for encroaching brush is near Don Jr.'s Garage, and near the Pet Hospital and along the less traveled part of Old 42 at the very north. Must prioritize maintaining at minimum 12.5 feet where possible.

*See "Specific Work Tasks" for further clarification on the expected scope of work being required.

Area H

Hempstead Drive North Inlet/Outlet



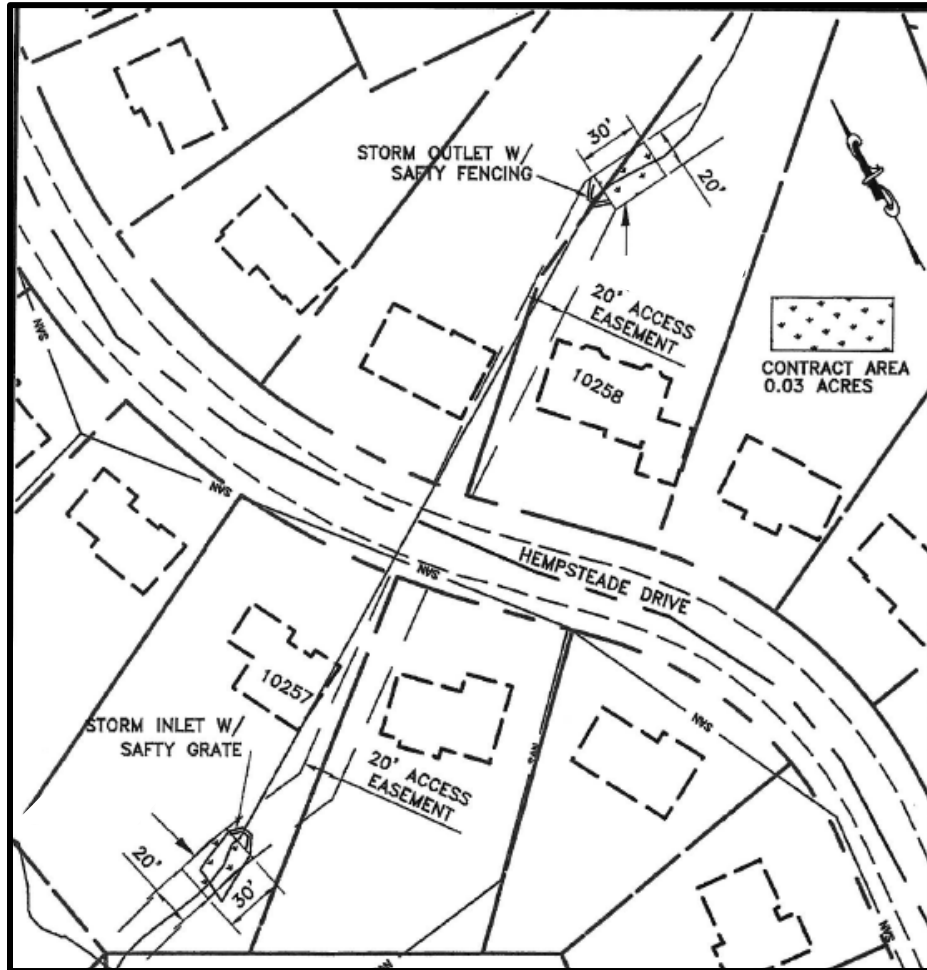
***Required Work**

- Maintenance of Storm Drains and Culvert Headwalls

*See "Specific Work Tasks" for further clarification on the expected scope of work being required.

Area I

Hempstead Drive South Inlet/Outlet



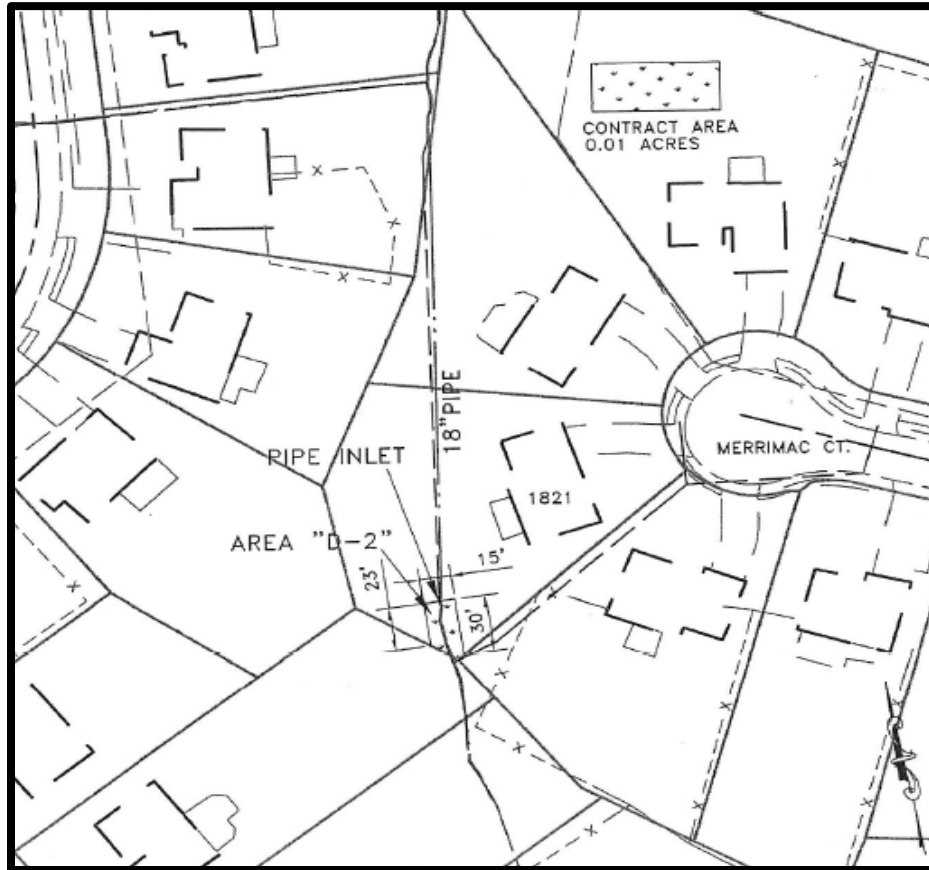
***Required Work**

- Maintenance of Storm Drains and Culvert Headwalls

*See "Specific Work Tasks" for further clarification on the expected scope of work being required.

Area J

Merrimac Inlet



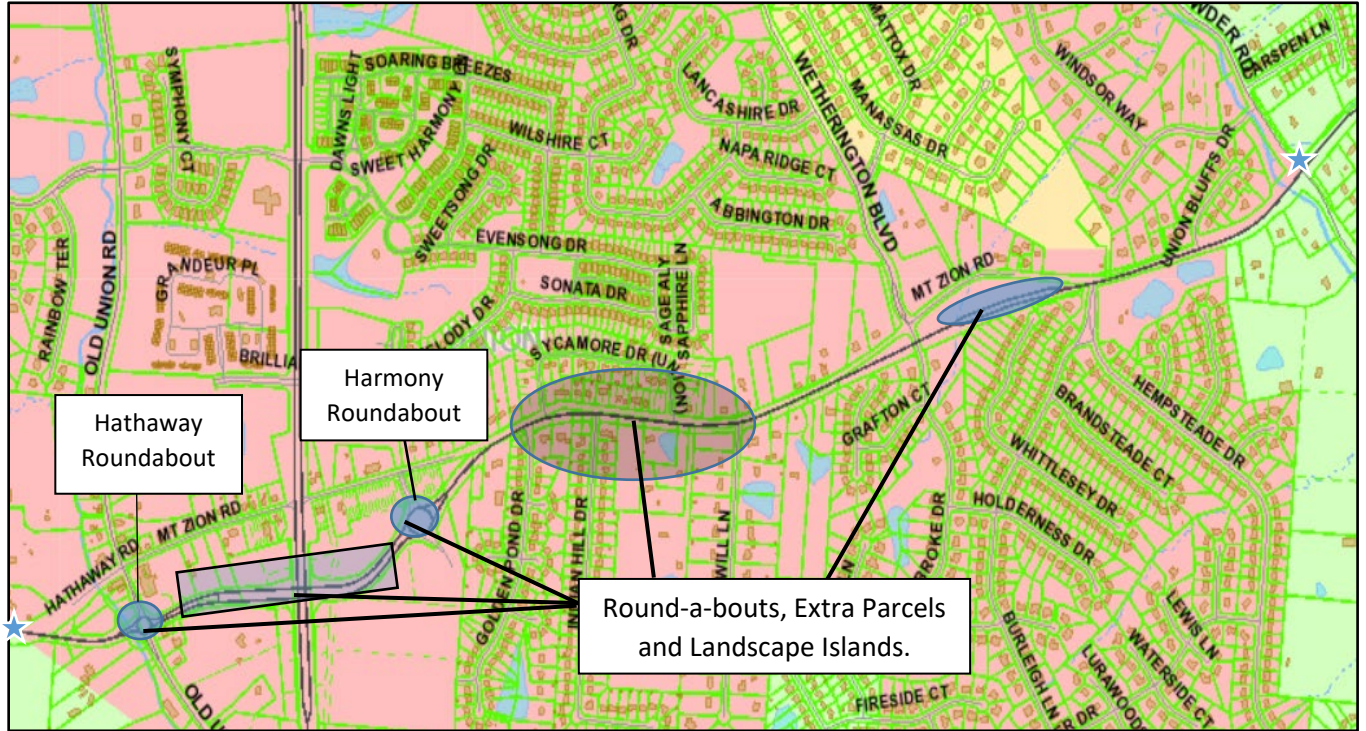
***Required Work**

- **Maintenance of Storm Drains and Culvert Headwalls**

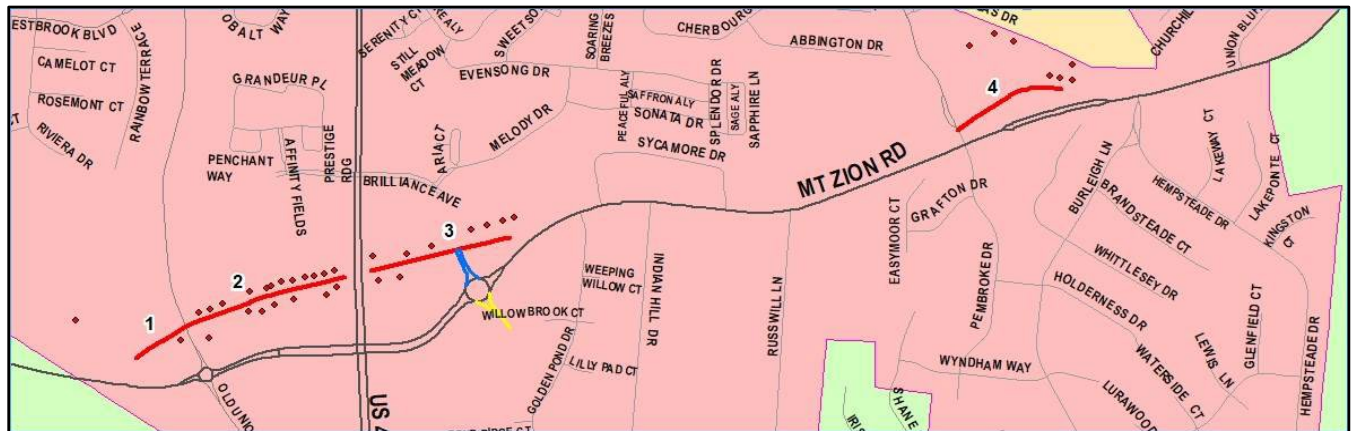
*See "Specific Work Tasks" for further clarification on the expected scope of work being required.

Area K

Mt. Zion Road Corridor



Previous Mt. Zion Road Streets

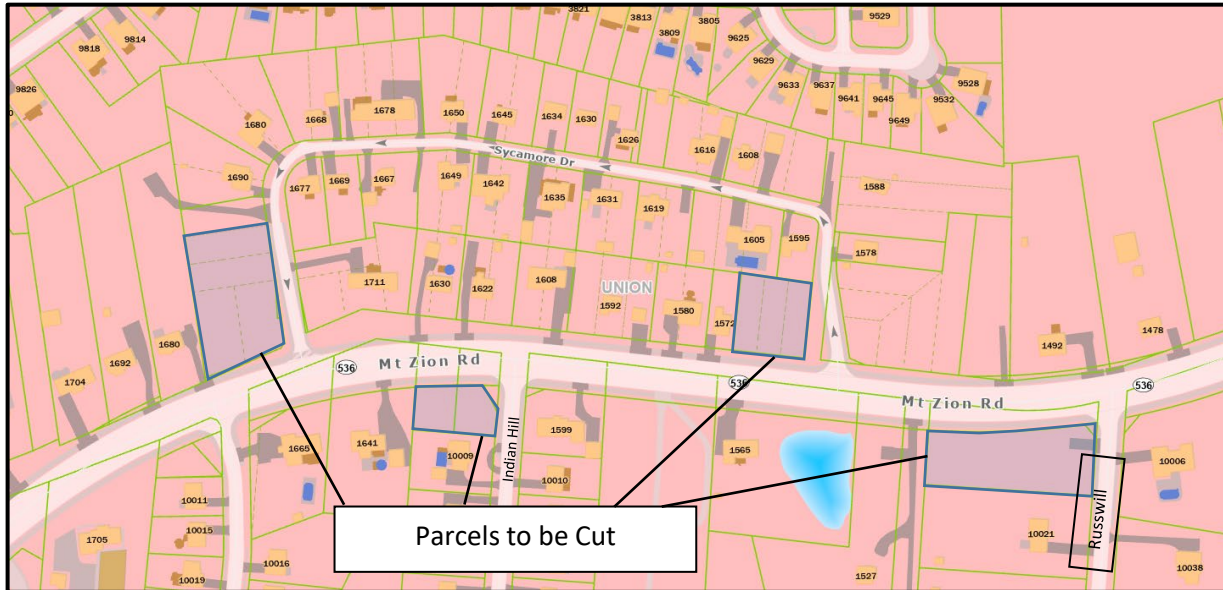


1 – Corner Court; 2 – Union School Road; 3 – Bristow Drive; 4 – Bandit's Blvd.

*See "Specific Work Tasks" for further clarification on the expected scope of work being required.

Area K Continued

Mt. Zion Road - Russwill/Sycamore/Indian Hill Area



***Required Work and Specific Instructions:**

- **Turf Maintenance (Mt. Zion Corridor)**
 - Begin at intersection of Gunpowder/Mt. Zion Road Northward, ending at Gun Powder Creek subdivision monument sign.
 - From Intersection of Gunpowder/Mt. Zion continue West until 800 feet after the Old Union Road Round About (Approx 2 miles)
 - All center road islands.
 - While the ultimate responsibility will reside with the contractor, many residences and HoAs will maintain their property to the road. Contractor judgement will be necessary.
- **Turf Treatments**
- **Tree/Shrub Maintenance**
- **Landscaped Bed Maintenance**
- **Spring Clean-up/ Mulching**
- **Weed Control on public sidewalks/curbs** (as necessary)

*See "Specific Work Tasks" for further clarification on the expected scope of work being required.